

## TUESDAY

15:10-15:35

**Alp's World Junior**  
15:10-15:35

**Fast Track Phonics A**  
15:10-15:35



15:50-16:15

**On Track Reading**  
15:50-16:15

16:45-17:10

**New** **Book Club: Magic Treehouse: Midnight on the Moon** 16:45-17:10

**Science Circle**  
16:45-17:10

17:15-17:40

**★ Nature's Notebook**  
17:15-17:40

**New** **Magical Mysteries**  
17:15-17:40

17:45-18:10

**Big Think**  
17:45-18:10



18:15-18:40

**Return to the Phonics Forest**  
18:15-18:40

18:50-19:15

**Quiz Night**  
18:50-19:15

**Story Time A**  
18:50-19:15

19:20-19:45

## THURSDAY

15:10-15:35

**On Track Writing**  
15:10-15:35

15:50-16:15

**Alp's World Junior**  
15:50-16:15

**Fast Track Phonics B**  
15:50-16:15

16:45-17:10

**New** **Book Club: Magic Treehouse: Midnight on the Moon** 16:45-17:10

**★ Connect the Dots**  
16:45-17:10

**Quiz Night**  
16:45-17:10

17:15-17:40

**★ Art in Color**  
17:15-17:40

**New** **Magical Mysteries**  
17:15-17:40

17:45-18:10

**On Track Reading**  
17:45-18:10

**Science Circle**  
17:45-18:10

18:15-18:40

**Fast Track Phonics A**  
18:15-18:40

**★ Nature's Notebook**  
18:15-18:40

18:50-19:15

**Big Think**  
18:50-19:15

**Story Time B**  
18:50-19:15

19:20-19:45



## WEDNESDAY

**On Track Reading**  
15:10-15:35

**Alp's World Junior**  
15:50-16:15

**★ Art in Color**  
16:45-17:10

**★ Connect the Dots**  
17:15-17:40

**Quiz Night**  
17:45-18:10

**Story Time B**  
18:15-18:40

**New** **Magical Mysteries**  
18:50-19:15

**★ Nature's Notebook**  
19:20-19:45

**Fast Track Phonics A**  
15:50-16:15

**Big Think**  
16:45-17:10

**Story Time A**  
18:50-19:15

**Return to the Phonics Forest**  
19:20-19:45



This is a brand new class this month. Why not give it a try?



A new theme for this class this month.



A reopened class with all new content.

### Class Descriptions



English



Japanese

- Story Time will host two unique stories per week.
- Fast Track Phonics' 12 lessons will continue to be split into A and B schedules. In July, A classes will cover lessons 5, 6, 7, and 8; B classes will cover lessons 11, 12, 1, and 2. Students can join all sessions.



Please refer to the **daily schedule in KA Connect** to see the courses with printable materials.



KA Plus!

# KA Plus! Grade 1

## KA Weeks 17 - 20 (7/2 - 7/29)

### FRIDAY

15:10-15:35

**Fast Track Phonics B**  
15:10-15:35

**Return to the Phonics Forest**  
15:10-15:35



15:50-16:15

**On Track Writing**  
15:50-16:15

16:45-17:10

17:15-17:40

17:45-18:10

**Big Think**  
17:45-18:10



18:15-18:40

**Story Time A**  
18:15-18:40

18:50-19:15

**Story Time B**  
18:50-19:15

19:20-19:45

### MONDAY

15:10-15:35

15:50-16:15

16:45-17:10

17:15-17:40

17:45-18:10

18:15-18:40

18:50-19:15

**On Track Reading**  
18:50-19:15



19:20-19:45

**On Track Writing**  
19:20-19:45

**Story Time B**  
18:50-19:15



**Story Time A**  
19:20-19:45

### SATURDAY

13:10-13:35

**New** **Magical Mysteries**  
13:10-13:35

13:40-14:05

**New** **Nature's Notebook**  
13:40-14:05

14:10-14:35

**New** **Science Circle**  
14:10-14:35

14:40-15:05

**Alp's World Junior**  
14:40-15:05



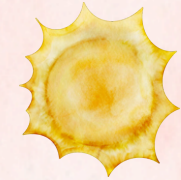
#### Class Descriptions



English



Japanese



This is a brand new class this month. Why not give it a try?



A new theme for this class this month.



A reopened class with all new content.



- Story Time will host two unique stories per week.
- Fast Track Phonics' 12 lessons will continue to be split into A and B schedules. In July, A classes will cover lessons 5, 6, 7, and 8; B classes will cover lessons 11, 12, 1, and 2. Students can join all sessions.



Please refer to **the daily schedule in KA Connect** to see the courses with printable materials.



KA Plus!